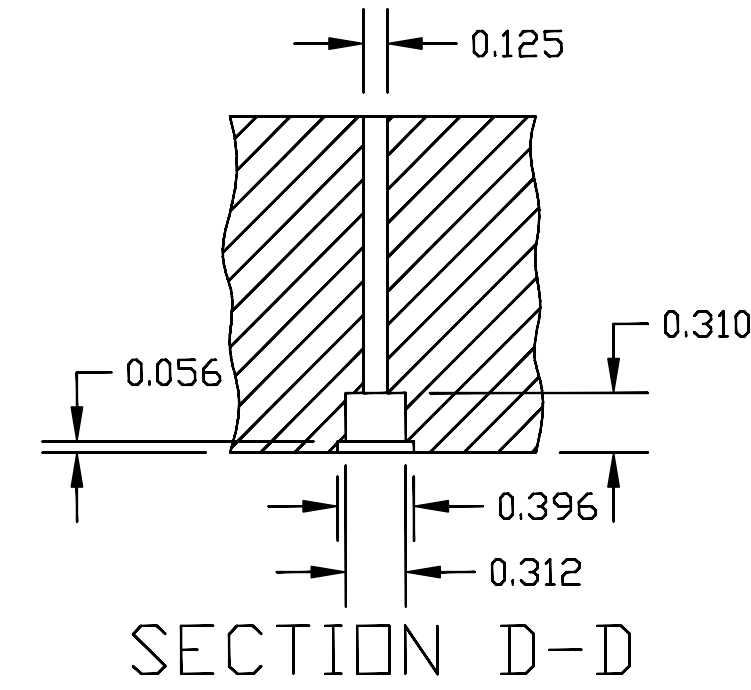


NOTES: UNLESS OTHERWISE SPECIFIED:

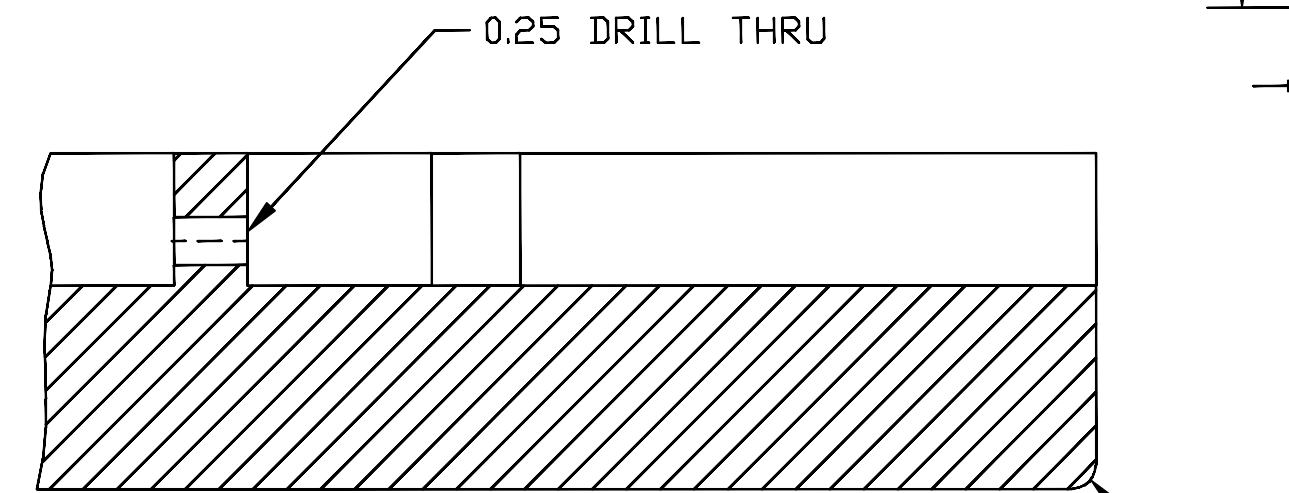
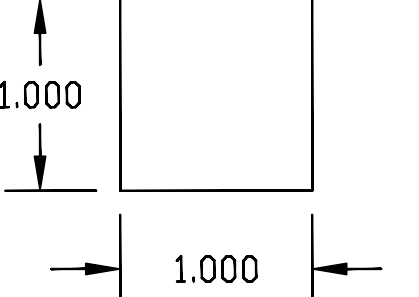
- 1. ALL DIMENSIONS ACROSS CENTERLINE ARE SYMMETRICAL TO CENTERLINE
- 2. LEFT-HAND BODY IS DIRECT OPPOSITE OF RIGHT HAND. LEFT HAND BODY CAN BE MADE BY REVERSING TOOLING.
- 3. BLEND ALL RADII
- 4. OUTLINE CONTOUR TO BE TAKEN FROM THIS DRAWING
- 5. THE DRAWING IS FOR REFERENCE ONLY AND DOES NOT GUARANTEE ANY DIMENSION TO MATCH ANY EXISTING MODEL WITH ACCURACY

| REVISIONS | | | |
|-----------|---|-----------|----------|
| REV | DESCRIPTION | DATE | APPROVED |
| A | CHANGED BODY R TO 0.125, NECK PKT TO 5/8, CNTRL CAVITY TO 3.125 | 30APR2007 | |
| B | CORRECTED BRIDGE PICKUP RADII | 02JUN2007 | |
| C | ADDED NECK POCKET RADII | 13JAN2008 | |
| D | REMOVED 0.687DP FROM BRIDGE | 12APR2008 | |
| | ADDED HOLE SPEC TO NECK POCKET | | |
| | ADDED DEPTH TO WIRING CHANNEL | | |
| E | CORRECTED NECK MTG HOLE CSK DIA | 04DEC2010 | |
| | CHANGED BRIDGE PICKUP ROTATION | | |
| | ADDED 2 DIMENSIONS MISSING FROM BRIDGE PICKUP | | |
| F | ADDED SCALE VERIFY BLOCK | | |



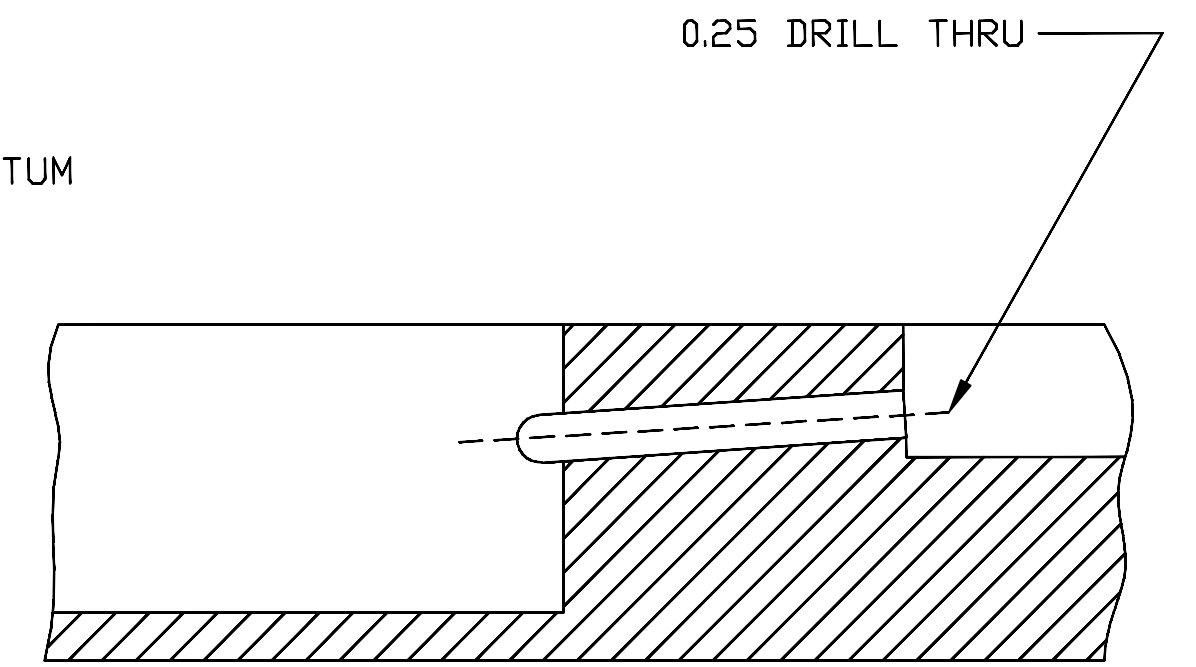
SECTION D-D

SCALE VERIFY BLOCK

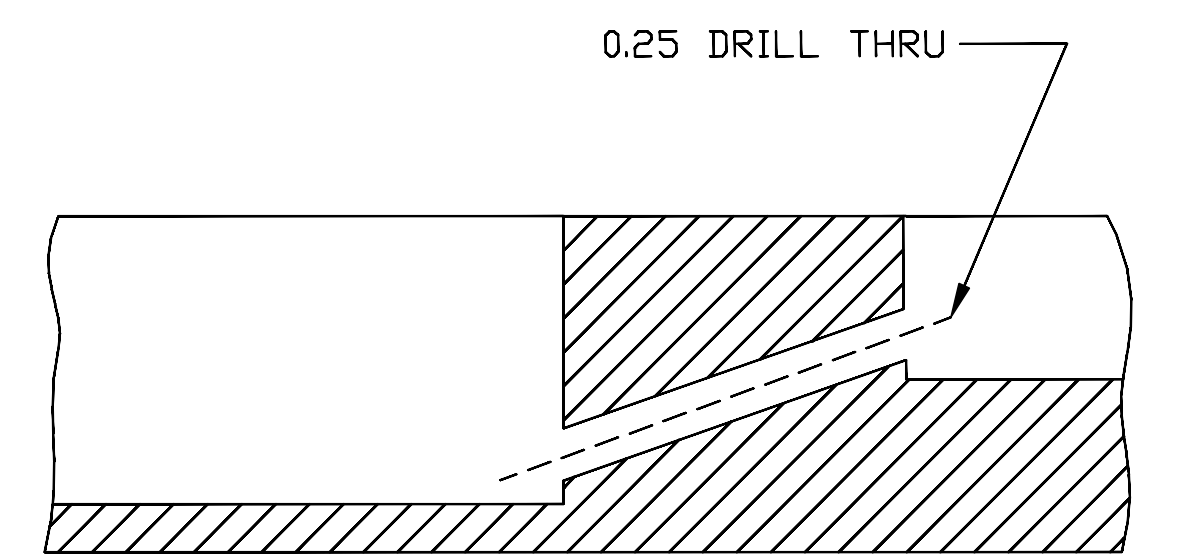


SECTION C-C

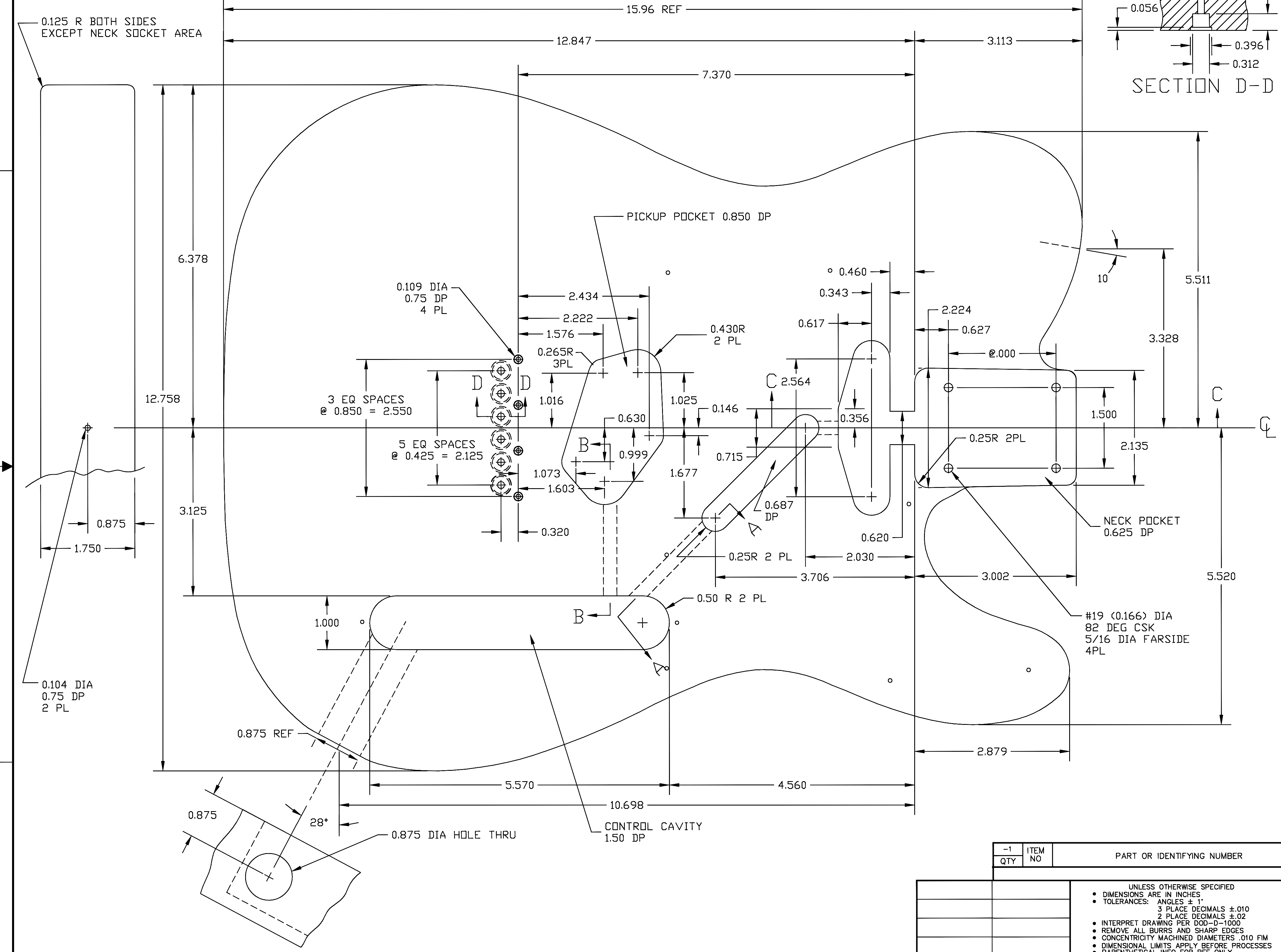
0.125 R NECK SOCKET AREA ONLY



SECTION A-A



SECTION B-B



DATUM

| REV | QTY | ITEM NO | PART OR IDENTIFYING NUMBER | NOMENCLATURE OR DESCRIPTION | PROCUREMENT SPECIFICATION | NOTES |
|------------|-----|---------|----------------------------|-----------------------------|---|-------|
| PARTS LIST | | | | | | |
| | | | | DWN T. DOWNS DATE 27APR2007 | TITLE THE TELECASTER BODY | |
| | | | | REV JMM DATE 19APR2014 | DESCRIPTION DIMENSIONS AND DETAILS FOR TELECASTER STYLE GUITAR BODY | |
| | | | | REV | SIZE FSCM NO DRAWING NO JMM DATE 26MAY2014 D JMG-1404-TSG01 | |
| | | | | GA CM | SCALE 1:1 SHEET 1 OF 3 | |
| | | | | CONTR | | |
| | | | | RLSE | | |
| | | | | APPLICATION | | |

- UNLESS OTHERWISE SPECIFIED
- DIMENSIONS ARE IN INCHES
- TOLERANCES: ANGLES ± 1°
- 3 PLACE DECIMALS ± .010
- 2 PLACE DECIMALS ± .02
- INTERPRET DRAWING PER DOD-D-1000
- REMOVE ALL BURRS AND SHARP EDGES
- CONCENTRICITY MACHINED DIAMETERS .010 FIM
- DIMENSIONAL LIMITS APPLY BEFORE PROCESSES
- PARENTHETICAL INFO FOR REF ONLY

| HOLE DIAMETER TOLERANCE | HOLE DIAMETER TOLERANCE | HOLE DIAMETER TOLERANCE |
|-------------------------|-------------------------|-------------------------|
| .013 +.004 | .125 +.005 | .251 +.006 |
| THRU -.001 | THRU -.001 | THRU -.001 |
| .125 -.001 | .250 -.001 | .500 -.001 |
| .501 +.008 | .751 +.010 | 1.001 +.012 |
| THRU -.001 | THRU -.001 | THRU -.001 |
| .750 -.001 | 1.000 -.001 | 2.000 -.001 |

| SEQ NO | IDENT | F-SPEC | NO | ADDITIONAL CLASSIFICATION | NOTES | REV STATUS OF SHEETS | REV | F |
|--------|-------|--------|----|---------------------------|-------|----------------------|-----|---|
| | | | | | | | | |

TELECASTER IS A REGISTERED TRADEMARK OF THE FENDER MUSICAL INSTRUMENT CORPORATION